

MAY 5 – PRESERVATION AWARDS

The May 5th joint program with PAHA will feature a Preservation Award for the recent restoration and addition work at Palo Alto High School. 2:00 pm, PA Art Center, 1313 Newell Road.



Palo Alto High School renovation rendering



*Michael
Makinen*



Amy French



Steven Eichler

Two instrumental Historic Resources Board (HRB) members will be honored with lifetime achievement awards: HRB long-time member Michael Makinen and Amy French, City liaison to the HRB.

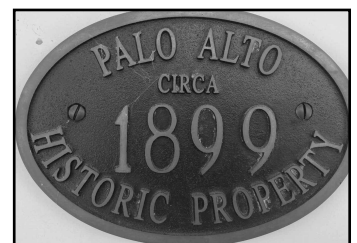
Another part of the program is the acknowledgement of Centennial Houses, which for this year are houses built in 1923. “Historic Property” Plaques were first awarded by the HRB in 1984 as part of the centennial of Palo Alto’s incorporation. Attached is a photo of an existing 1899 plaque. Owners of a house built in 1923 or earlier are welcome to inquire PAST about getting a plaque. There are no restrictions on where plaques are to be posted—some people keep them inside—and also no historic implications other than the centennial anniversary of the house’s construction.

The Eichler community of Greenmeadow, a National Historic District, will also be honored as 2024 marks the 70th anniversary since the 1954 Greenmeadow map was approved by the City of Palo Alto. Joseph Eichler’s company purchased several blocks of lots on the 1954 map that were close to other lots on which Eichler Homes had been building since 1950. Tucked away from busy Charleston Road and Alma Street, Greenmeadow has its own community center with swimming pool. The Greenmeadow walk is on June 1.

Steven Eichler will be the guest speaker.



*Greenmeadow
Community
Association*



1899 Centennial Plaque

PAST celebrates National Preservation Month

PAST Preservation awards program is May 5, joint meeting with PAHA, 2 pm, Palo Alto Art Center, 1313 Newell Rd.

May is National Preservation Month. Santa Clara County has 119 properties and districts listed on the National Register. Of these, 22 in Palo Alto:

Theophilus Allen House (601 Melville Ave)

Pedro de Lemos House (100-110 Waverley Oaks)

T.B. Downing House (706 Cowper St)

Dunker House (420 Maple St)

Fraternal Hall Building (University Ave & High St)

Green Gables Historic District

****Greenmeadow Historic District

Hewlett-Packard House/Garage (367 Addison Ave)

**Hostess House (University Ave & El Camino)

Kee House (2310 Yale)

Norris House (1247 Cowper St)

Palo Alto Medical Clinic (300 Homer Ave)

**Southern Pacific Depot (University Ave)

Pettigrew House (1336 Cowper St)

*Professorville Historic District

Ramona Street Architectural District

***John Adams Squire House (900 University Ave)

U.S. Post Office (380 Hamilton Ave)

Veterans Affairs (VA) Hospital Site

***Wilson House (860 University Ave)

Woman's Club (475 Homer Ave)

T. Zschokke Cottages (617 and 621 High St)

*on the Sunday morning May 5 walking tour

**on the May 11 walking tour

***on the May 25 walking tour

****on the June 1 walking tour

Most other listings above are included on other PAST walking tours, every Spring and Fall

Stanford has four listings on the SC Co. list:

Hanna Honeycomb House (737 Frenchman's Rd)

Lou Henry Hoover House (623 Mirada Rd)

McFarland House J (775 Santa Ynez St)

Palo Alto Stock Farm Horse Barn (Fremont Rd)

National Historic Register Houses on PAST's 2024 Spring Tour



860 University



900 University

California Registered Historical Landmark #857

SPRING 2024 TOURS

Sunday May 5, 10:00 am, meet at 1005 Bryant Street, corner of Addison, for a four block tour of



Professorville. We'll explore the 1000 and 1100 blocks of Ramona (*new to recent walking tours*) and return on the 1100 and

1000 blocks of Bryant, which include the original Castelleja School, the Varian House, and Sunbonnet House. Ramona Street, created in 1900, has its own special houses. One-half mile approx.

Saturday, May 11, 10:00 am, meet at El Palo Alto Park, corner of Alma Street,



117 Palo Alto Ave. Leland Stanford originally named his estate "Palo Alto." This new tour covers Palo Alto and Stanford landmarks on both sides of the RR tracks, including the former Stanford homesite, the Winery, Hoover Pavilion, Julia Morgan's

MacArthur Park, the streamline moderne University Depot, the Tower Well, and The Palo Alto. It's a little over 2 miles and covers historic features of Stanford and Palo Alto. 2.5 miles approx.

Saturday May 18, 10:00 am, meet at Escondido Elementary School parking lot, 890



Escondido Road. Last fall, we had a good turnout for Lower College Terrace. This new version explores from Dartmouth Street to Amherst Street, where sits the "Jewel of College Terrace." 1.5 miles.

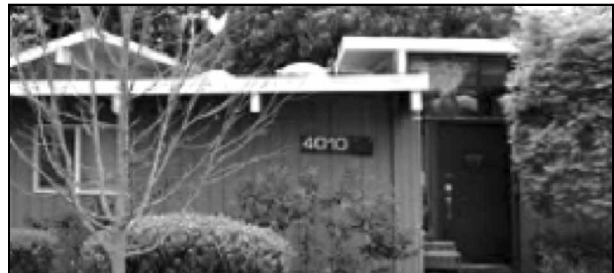
Saturday May 25, 10:00 am, meet on the last Seneca Street block before University Ave (near 526



Seneca). This tour combines some of the former Crescent Park tour, including the Squire House, in photo, some of

the Boyce Ashby tour, including the Herzinger House, and some distinguished houses on the 900 block of Forest and 600 block of Seneca (new). Three-quarters mile approx.

Saturday June 1, 10:00 am, in Greenmeadow opposite 4010 Nelson Drive, The tract map was approved on June 14, 1954, 70 years ago almost to the day. The tour covers the iconic



Eichler houses and unique community center, designated on the National Register of Historic Places. A little over 1 mile.

Participants are responsible for their own hydration, weather elements protection, and safety. As always, the PAST walking tours are free to the public, No RSVP required. We will always accept a donation mailed to our office and are seeking new members. If you're interested in being a tour guide, please attend one or more of these tours. If you want to proceed after that, we'll provide you with plenty of background material, more than you can ever use and you choose what to highlight.

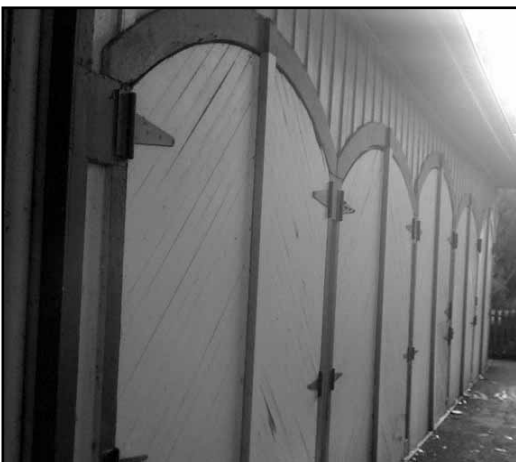
The PA-SU Walk

The May 11 PA-SU walking tour covers the most iconic structures on the Palo Alto-Stanford border, beginning with *El Palo Alto*. Palo Alto's famous redwood tree serves as both the namesake of Stanford's Palo Alto Stock Farm and the town that was created to support the university in his son's name. Across the pedestrian/bike bridge is California Registered Historical Landmark #2 marking Portola's campsite across the creek from El Palo Alto.



El Palo Alto from a distance south in 1906

After El Palo Alto Park, we cross El Camino Real to the creekside property once called Mayfield Grange, owned by George Gordon. Likely Gordon named his estate after Mayfield Farm, farther south, which is how the Mayfield post office and later the town got its name. Leland Stanford bought the estate. Discarding the Mayfield identity, he renamed the estate "Palo Alto" and remodeled Gordon's house as his family's



Stanford Carriage House

summer getaway. That house is long gone but Gordon's carriage house remains along with the site of Leland Jr.'s first tomb, both on the walking tour.



Old Winery
700 Welch Road

Turning onto Vineyard Avenue, the tour passes by an impressive red brick structure. A small campus vineyard produced vintages in the red brick winery, on Vineyard Avenue and Welch Road. Its history as a winery became lost and locals simply called it "The Barn," now signed as the "Old Winery."



A prime example of 1930s Art Deco is the Hoover Pavilion, which was the new Palo Alto Hospital in 1931 (photo above), the birthplace of many locals until a new hospital was built around 1960.



Walk *(Continued)*



Hostess House 1918

Re-crossing El Camino, the tour passes the MacArthur Park restaurant on the National Register of Historic Places for its original function as the YWCA Hostess House for Camp Fremont, 1917-18, designed by Julia Morgan. The house is also California Registered Historical Landmark #895.

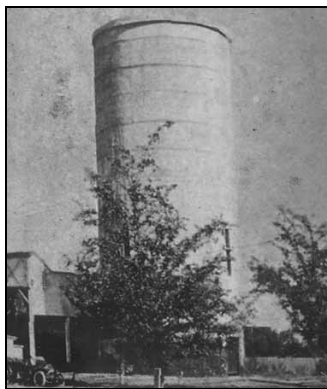


Across the bus lanes is the former Southern Pacific Depot, now Caltrain Station (photo above), also on the National Register. Completed in 1941, it is a prime example of the 1930s Streamline Moderne style.

The tour crosses Alma and passes by an eclectic row of historic structures beginning with the unique Dahl Plumbing building, three houses from the 1910s including the former North Face store, a 1946 Streamline Moderne building, and the 78-foot tall 1910 Tower Well. Across Hawthorne Ave are the



Dahl Plumbing at 329 Alma



Tower Well

Gateway Village condos, proclaiming itself as the north gateway into Palo Alto. A 1905 house at 141 Alma Street has a plaque stating the same. Finally on the corner is the 10-story condominium building called The Palo Alto.



235 Alma - 1911



141 Alma - 1905



217 Alma - 1946

Palo Alto High School

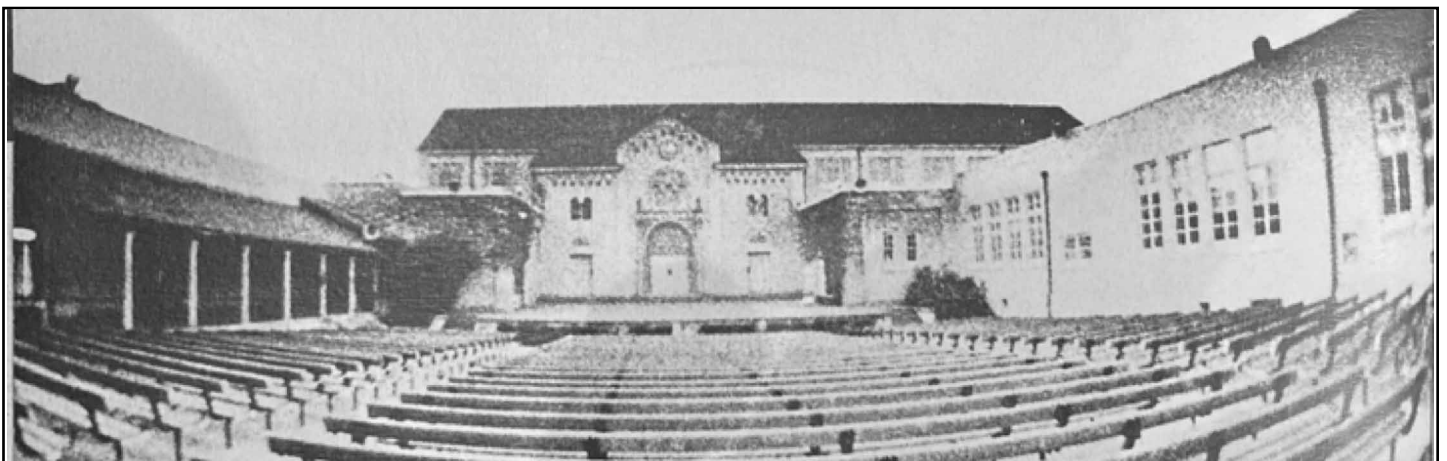


1901 HS Channing and Webster

A high school in Palo Alto was founded in 1894, housed in two rooms of the grammar school at Webster Street and Channing Ave. Three years later, in 1897, larger quarters were provided by Anna Probst Zschokke, who erected a house on her property residence for the high school, later converted to her residence.



1918 plaque facing Embarcadero



1968 Amphitheater (gone)

Paly *(Continued)*



2009 south wall



2024 south wall under construction

A bond election resulted in the building of a new high school, opened in 1901, on Channing across from the old grammar school. With the school population still growing, in 1915, the Stanford University trustees leased about thirty acres of vacant land at Embarcadero Road and El Camino Real to the union high school district with ground breaking in December 1917.

On December 24 1918, the school was essentially finished, built in the Mission form of architecture, combined with the Italian Renaissance, with a court in the middle. Classes began in January 1919.

That original high school has gone through many physical changes since then. The wooden-seat amphitheater is gone as is the southwest wing close to El Camino. Isolated buildings now fill the campus. Recently however, the little used Memorial Court has undergone the addition of a large patio and classical balusters. Meanwhile a new entrance has been built with an adjoining tower on the previously blank south facing wall (see 2009 photo above).



2018 Memorial Court before remodel



2024 Memorial Court remodeled

Spring 2024 PAST Calendar

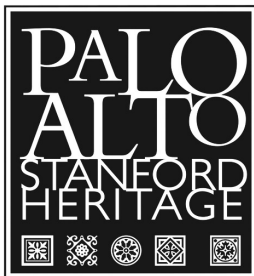
See page 3 for more information

May 5 (Sunday)	Professorville (Ramona-Bryant) Meet at 1005 Bryant St Corner of Addison
May 11 Saturday	Stanford's Palo Alto Meet at El Palo Alto Park 117 Palo Alto Ave (corner Alma)
May 18 Saturday	Upper College Terrace Meet at Escondido Elementary 890 Escondido Road
May 25 Saturday	University Avenue Meet opposite 526 Seneca Near University Ave
June 1 Saturday	Greenmeadow Meet opposite 4010 Nelson Drive Near Parkside Drive

PAST Heritage Board of Directors

as of April 1, 2024

President:	Lee Lippert
Vice President:	Philip Roberts
Secretary & Newsletter	Bo Crane
Treasurer:	Brian George
Historian:	Steve Staiger
HRB Rep:	Gogo Heinrich
Web:	Carolyn George
Newsletter:	Susan Borton
Directors at Large:	David Bower Nick Marinaro Simon Pennington Laura Roberts



PAST News
Palo Alto Stanford Heritage
P.O. Box 308
Palo Alto, CA 94302

PAST Heritage is a nonprofit organization advocating the preservation of the historic architecture, neighborhoods, and character of the greater Palo Alto Stanford area through informed citizen involvement and education.

www.pastheritage.org

Annual membership is \$40.00. To join:
mail a \$40 check to PAST at the PO Box 308
and include your contact information:
local address, email address, phone number(s)